

General Specifications - Model ABC75.0-40D40Y

Input Voltage	400
Output Voltage	400/230
Frequency	50/60 Hz.
Continuous Capacity	75 kVA
BTU/Hr. Output	3841
Efficiency	≥ 98.5% (at full load, unity power factor)
Step Load Change	± 0.8% (at unity power factor)
Noise Rejection	With unit under power and the isolation transformer configured for a transformation ratio of 1:1 and with an ANSI/IEEE C62.41, Category A pulse applied either normal mode or common mode at the input, the noise output voltage will be less than 10 volts normal mode and less than .5 volts (½ of one volt) common mode in all four quadrants (CM-NM, NM-NM, CM-CM, NM-CM).
Surge Voltage Withstand	Tested under power to ANSI/IEEE C62.41, Category A & B (formerly IEEE587-1980). Power conditioner tested to withstand up to 6000 volts @ 3000 amp ringwave and unipolar impulse.
Construction Materials	Transformer wires are copper and insulated with Class H materials. Windings are insulated with Nomex paper insulation before vacuum varnishing. Internal wiring is a minimum of 200 degree C rated and sleeved with Class H materials. Grain oriented silicon iron cores are constructed using 14 mil. laminations interleaved one to one. Eddy currents are minimized and external magnetic fields are below 0.1 oersted (at 12 inches distance in any direction). Unit is RoHS compliant.
Physical Dimensions	
H x W x D - mm. (inches)	1194 x 559 x 990 (47 x 22 x 39)
Weight in kg. (lbs.)	687 (1511)

Input Connection Requirements*

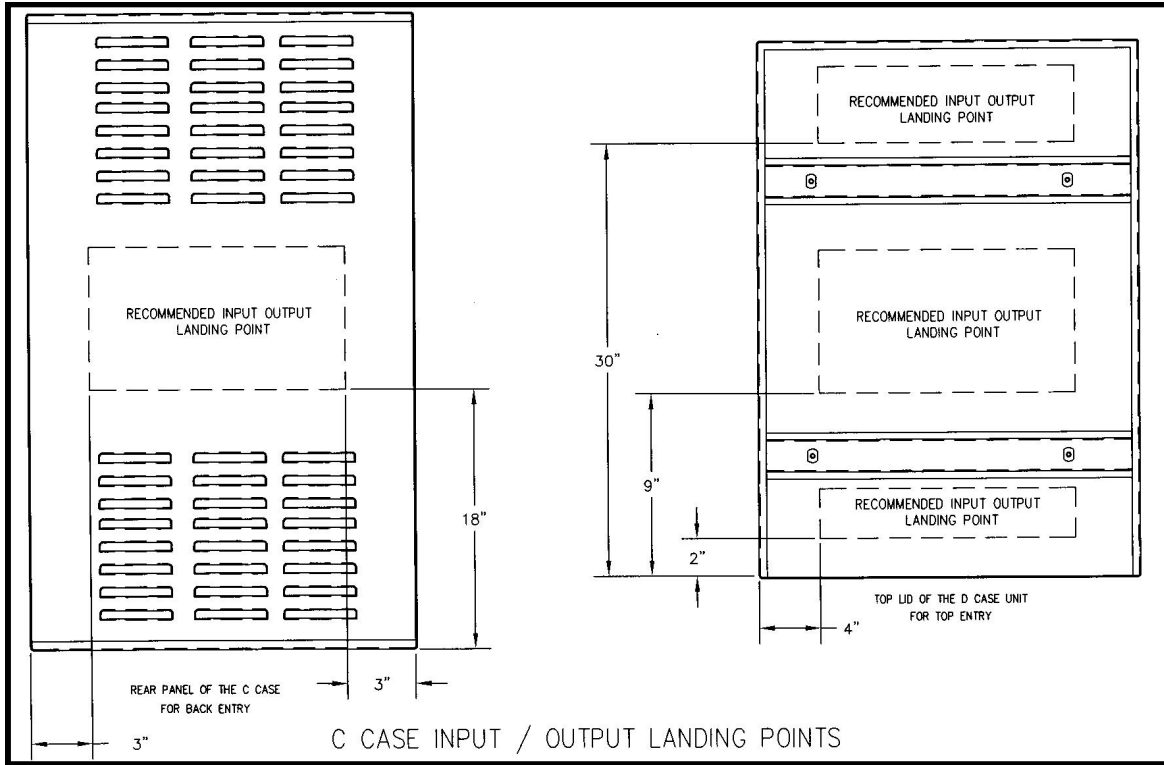
Input Voltage	Input Current (FLA)	Supply Breaker Rating @ Switchgear	AIC (Current Interrupt Capacity of Input Circuit Breaker)	Minimum Input Conductor Size (includes ground)	Input Lug Maximum Wire Size
400	108	150	25 kAmps	1 AWG	300 kCMIL

Output Voltage	Output Current (FLA)	Minimum Output Conductor Size (includes ground)	Output Lug Maximum Wire Size
400/230	108	3 AWG	2/0

* Supply breaker ratings are determined by NEC guidelines limiting breaker loading to 80% of rated breaker capacity. Calculations for supply breaker recommended ratings are based on input full load amps multiplied by 1.25 and then selecting the next larger standard size breaker. Wire sizes shown in the input and output connection tables of this specification sheet are the minimum sizes allowed by electrical codes for each supply breaker rating and are taken from the 2002 National Electrical Code Article 310.16 table references for use in 90° C installations.



1450 Lakeside Drive, Waukegan, IL 60085
 (847) 596 - 7000 - (Outside Illinois 800 - 369-7179), Fax (847) 596 - 7100
 www.powervar.com



1.5" Sq. x .187" Wall Tube is welded to bottom panel of cabinet frame

5/16-18 x2.5" Grade 5 Bolts

3/8-16 Grade 5 Bolt

Seismic Anchorage Data

Max total weight in kg. (lbs.) = 545.5 (1200)

Max. weight per foot in kg. (lbs.) = 198.6 (437)

39.20

46.75

20.35

17.5

7.3

24.0